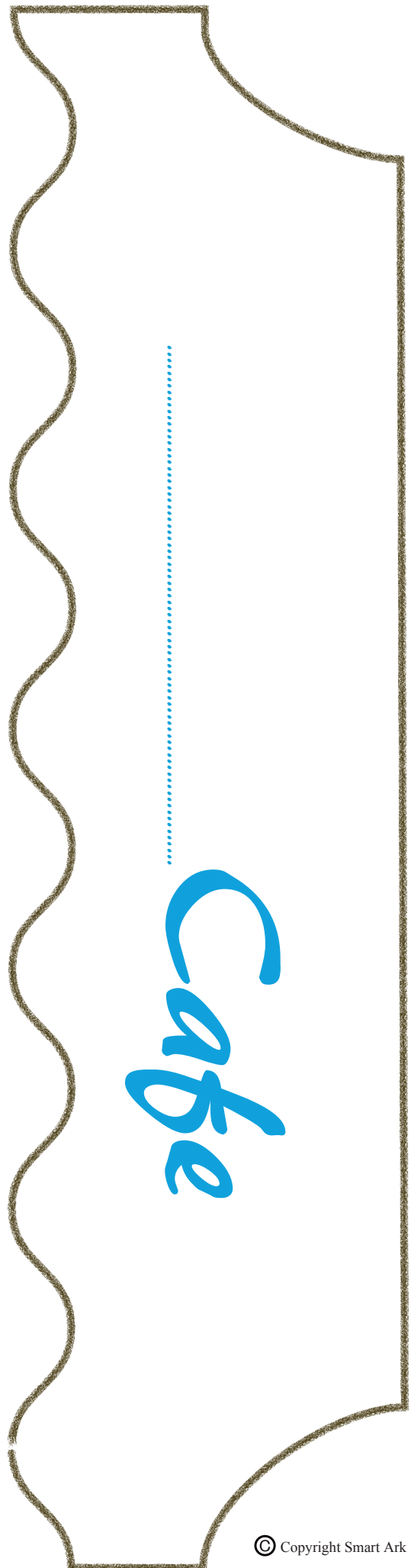
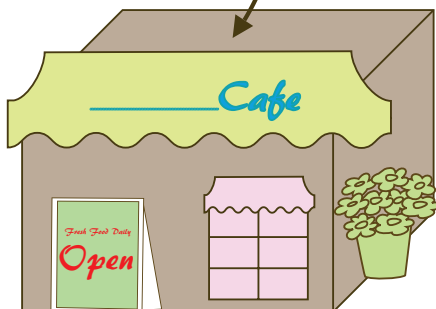
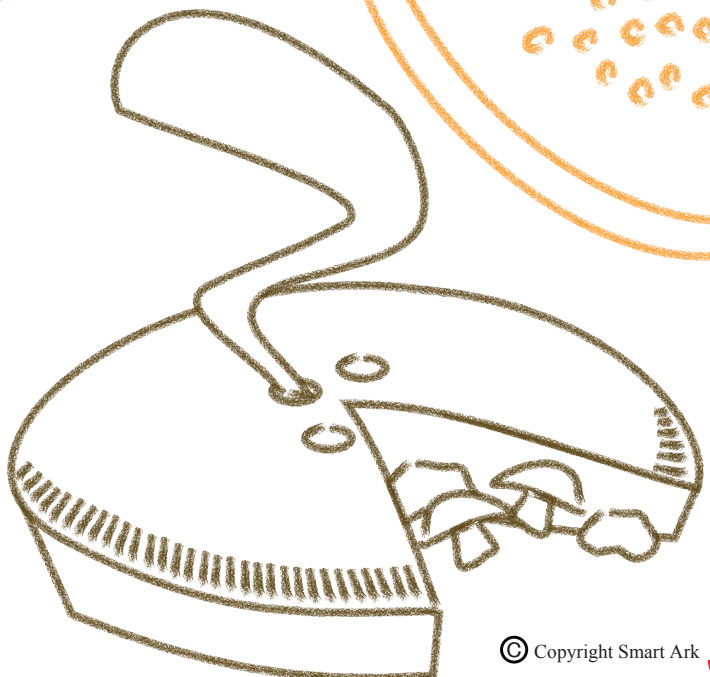
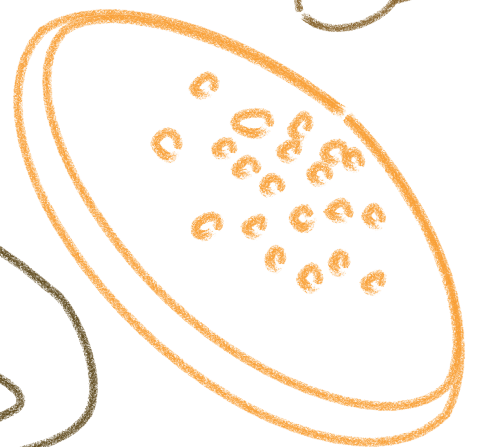
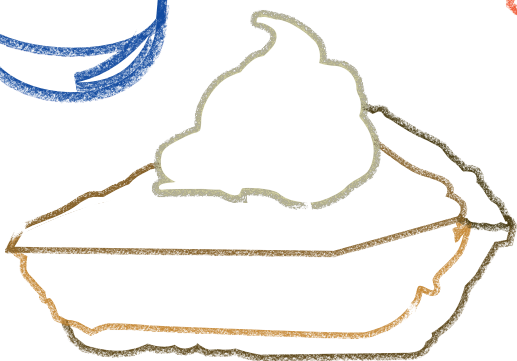
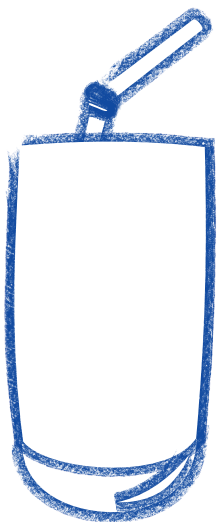
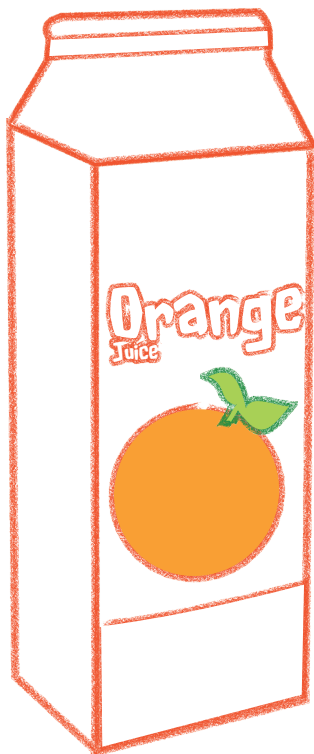
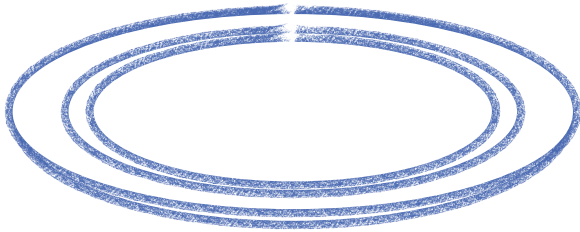
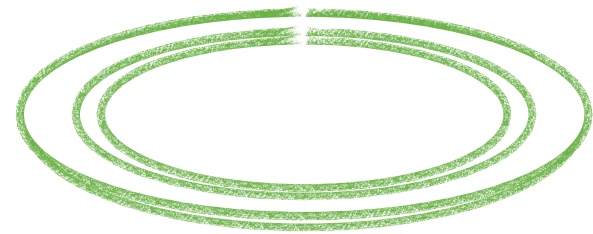


Cut out images, colour in and stick on to a cardboard box to make your very own cafe!



write your name



A circular logo with a thick grey border. Inside the circle, the number '10' is prominently displayed in a large, bold, grey serif font. Below the number, there are two stylized palm trees, one on the left and one on the right, rendered in a light grey line-art style.A circular logo featuring a large, bold, black number '5' in the center. On either side of the '5' are two stylized palm trees. The entire design is enclosed within a double-lined circular border.A circular logo with a thick grey border. Inside the circle, the number '10' is written in a large, bold, grey serif font. Below the number, there are two stylized palm trees, one on the left and one on the right, also in grey. The palm trees have three fronds each and a long, thin trunk.A circular logo with a thick grey border. Inside the circle, the number '10' is written in a large, bold, grey serif font. Below the number, there are two stylized palm trees, one on the left and one on the right, also in grey. The palm trees have three fronds each and a long, thin trunk.A circular logo with a thick grey border. Inside the circle, the number '10' is prominently displayed in a large, bold, grey serif font. Below the number, there are two stylized palm trees, one on the left and one on the right, rendered in a simple line-art style.